

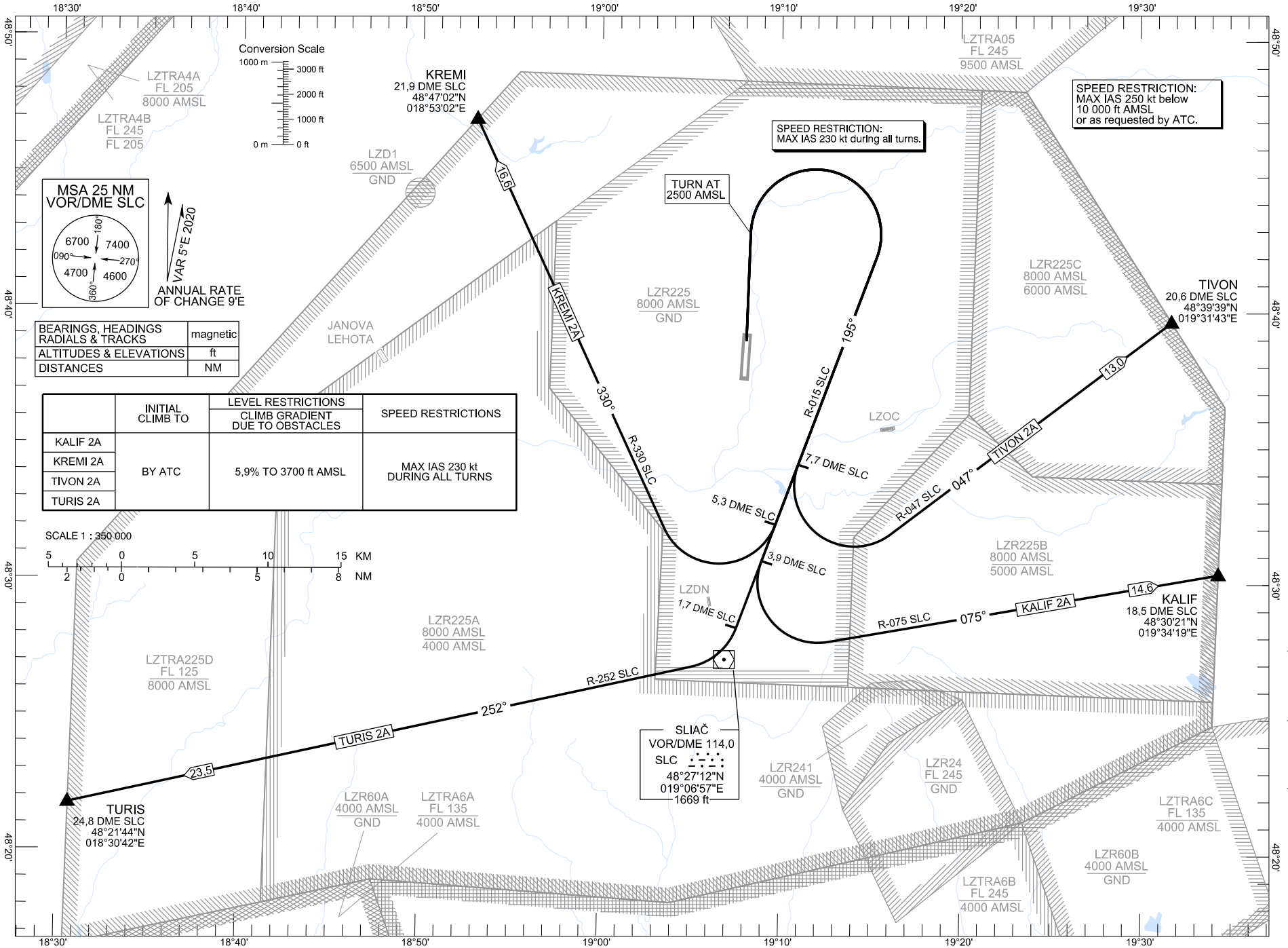
STANDARD DEPARTURE CHART -  
INSTRUMENT (SID) - ICAO

TRANSITION ALTITUDE  
10 000 ft

SLIAČ APPROACH/RADAR  
SLIAČ TOWER  
119.155  
122.905

SLIAČ (LZSL)  
SID RWY 36  
ACFT CAT A/B/C/D  
KALIF 2A, KREMI 2A, TIVON 2A, TURIS 2A via VOR SLC

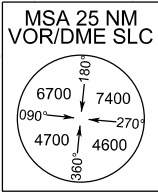
CHANGES: MAG VAR; MSA; FATRA 1A withdrawn, new JANOVA LEHOTA AD established



SPEED RESTRICTION:  
MAX IAS 250 kt below  
10 000 ft AMSL  
or as requested by ATC.

SPEED RESTRICTION:  
MAX IAS 230 kt during all turns.

TURN AT  
2500 AMSL



VAR 5°E 2020  
ANNUAL RATE  
OF CHANGE 9'E

BEARINGS, HEADINGS RADIALS & TRACKS	magnetic
ALTITUDES & ELEVATIONS	ft
DISTANCES	NM

	INITIAL CLIMB TO	LEVEL RESTRICTIONS	SPEED RESTRICTIONS
		CLIMB GRADIENT DUE TO OBSTACLES	
KALIF 2A	BY ATC	5.9% TO 3700 ft AMSL	MAX IAS 230 kt DURING ALL TURNS
KREMI 2A			
TIVON 2A			
TURIS 2A			

SCALE 1 : 350 000

