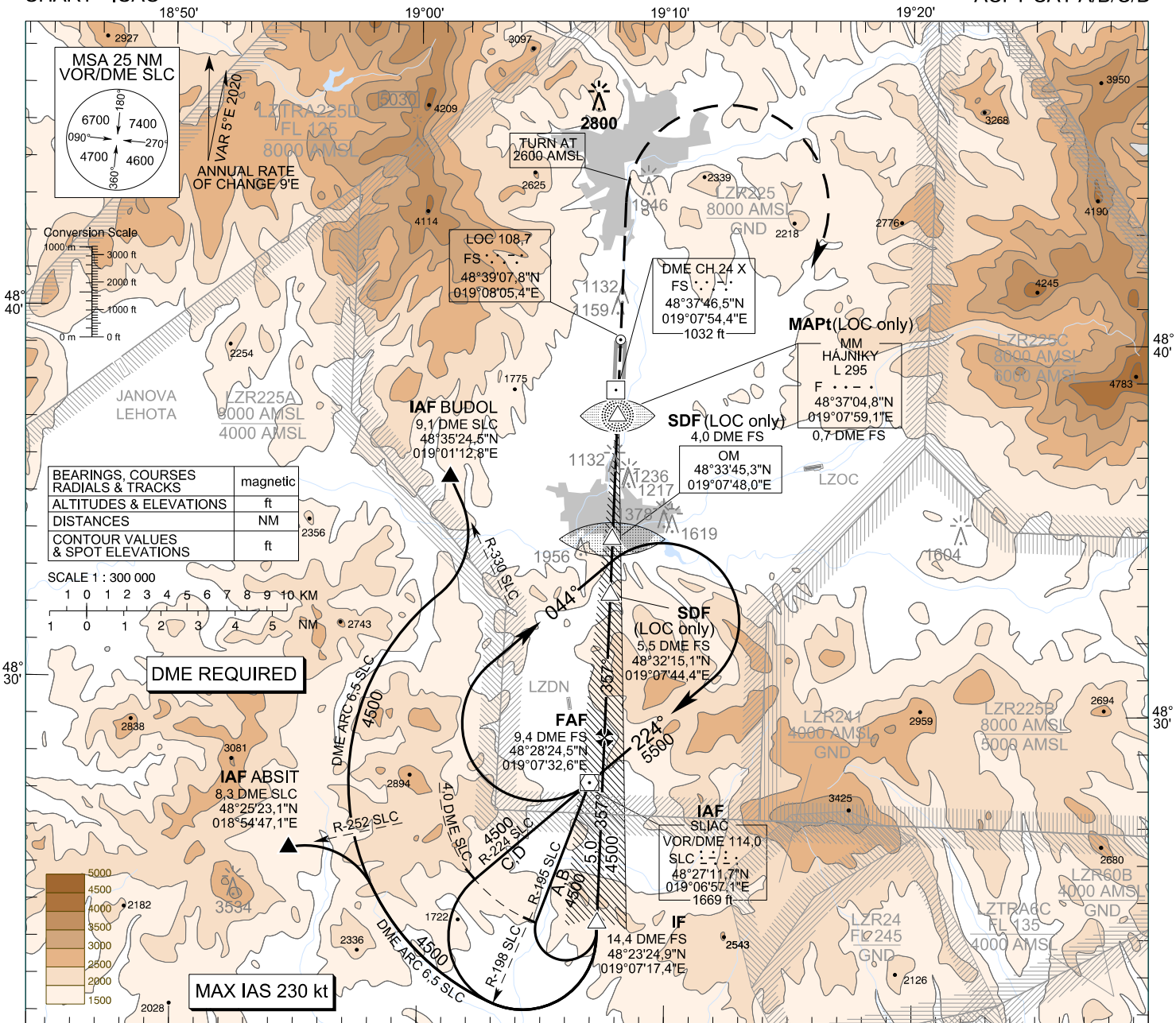


**INSTRUMENT
APPROACH
CHART - ICAO**

TRANSITION ALTITUDE
10 000 ft
AD ELEV 1043,8 - 38 hPa
THR RWY 36 ELEV 1014,5 - 37 hPa

SLIAČ APPROACH/RADAR 119,155
SLIAČ TOWER 122,905

**SLIAČ (LZSL)
ILS CAT I or LOC Z RWY 36
ACFT CAT A/B/C/D**

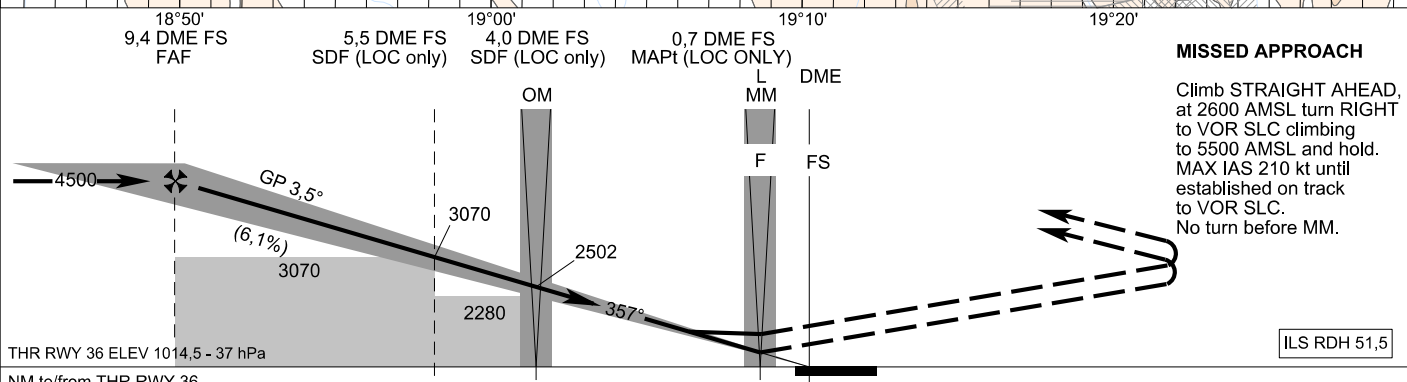


BEARINGS, COURSES RADIALS & TRACKS	magnetic
ALTITUDES & ELEVATIONS	ft
DISTANCES	NM
CONTOUR VALUES & SPOT ELEVATIONS	ft



DME REQUIRED

MAX IAS 230 kt



MISSED APPROACH
Climb STRAIGHT AHEAD,
at 2600 AMSL turn RIGHT
to VOR SLC climbing to
5500 AMSL and hold.
MAX IAS 210 kt until
established on track to
VOR SLC.
No turn before MM.

ILS RDH 51,5

OCA (OCH)	ASC	A				B				C				D			
		2,5%	5,0%	2,5%	5,0%	2,5%	5,0%	2,5%	5,0%	2,5%	5,0%	2,5%	5,0%	2,5%	5,0%		
Straight-In Approach	CAT I	ft	1763 (749)	1777 (763)	1787 (773)	1800 (786)											
		ft	1176 (162)	1186 (172)	1202 (188)	1220 (206)											
	LOC	without SDF	ft	3070 (2056)													
		with SDF	ft	1940 (926)													
Circling (* see Note)	ft	2,5%	3070 (2056)														
		5,0%	1520 (506)														
		ft	2410 (1366)				2810 (1766)				2840 (1796)						

DME FS	NM	9,0	8,0	7,0	6,0	5,0	4,0	3,0	2,0
ALTITUDES	ft	4361	3989	3617	3246	2874	2502	2131	1759
Ground speed	kt	70	90	100	120	140	160	180	
FAF - MAPt (8,7 NM)	min:sec	7:27	5:47	5:13	4:20	3:43	3:15	2:54	
Rate of descent (6,1%)	ft/min	434	557	619	743	867	991	1115	

Timing not authorized for defining the MAPt

CHANGES: new chart